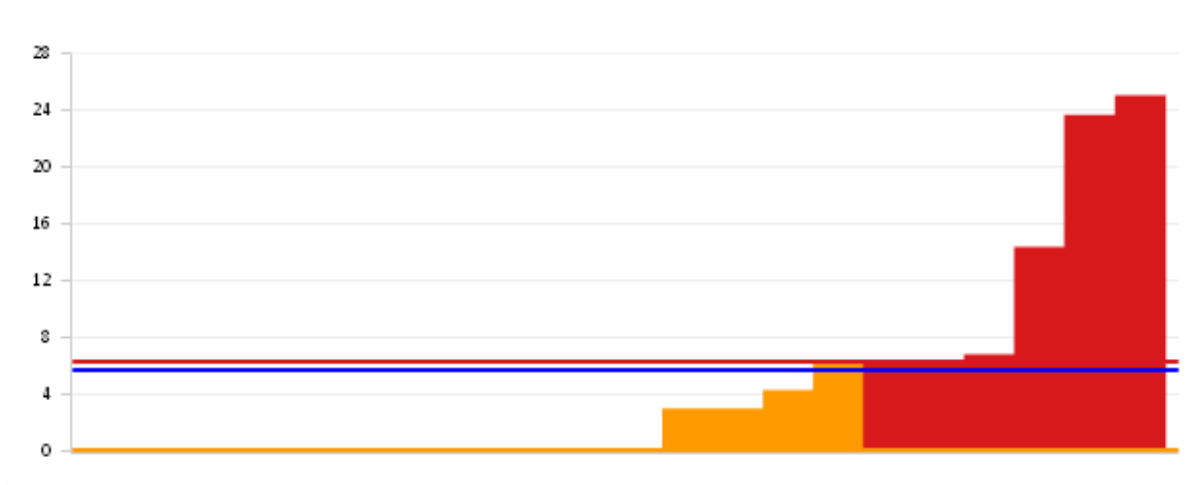


Education Benchmarking Indicators for the Financial Year 2012/13

It should be noted that the performance attained is based on the Summer 2012 results and that of the indicators to be reported as part of the Improvement Plan, only 4 are in the National Performance Management Framework.

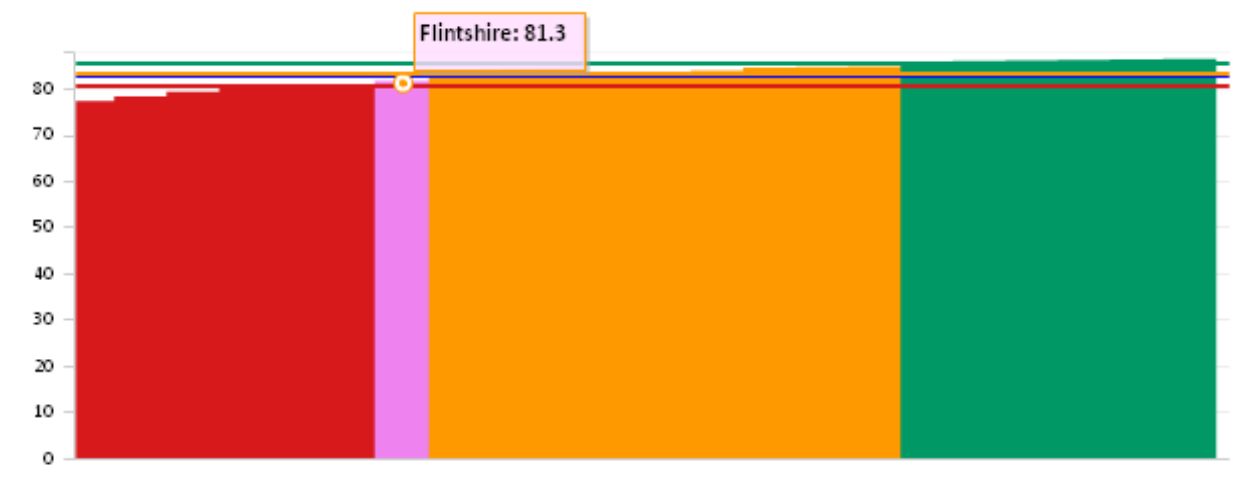
EDU/002ii – The percentage of learners (in local authority care) leaving education without a recognised qualification – Flintshire was among the best performers (green) with performance of 0%

	Comparator	Data Value
●	Wales	5.7
●	UPPER QUARTILE	0.0
●	MEDIAN	0.0
●	LOWER QUARTILE	6.2



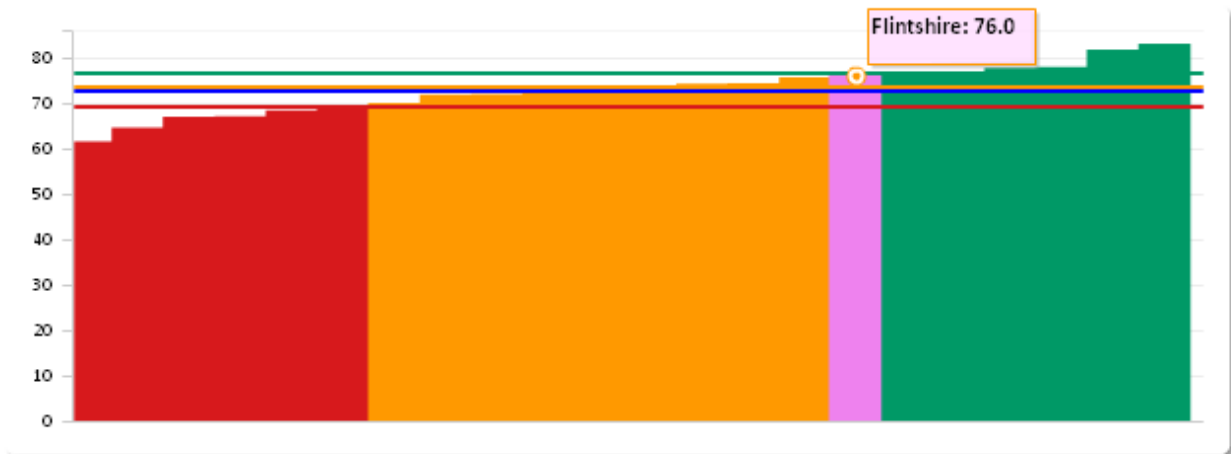
EDU/003 – The percentage of learners achieving the Core Subject Indicator at Key Stage 2– Best performer achieved 86.4%

	Comparator	Data Value
●	Wales	82.8
●	UPPER QUARTILE	85.4
●	MEDIAN	83.6
●	LOWER QUARTILE	80.9



EDU/004– The percentage of learners achieving the Core Subject Indicator at Key Stage 3– Best performer achieved (83.0%)

	Comparator	Data Value
●	Wales	72.7
●	UPPER QUARTILE	76.6
●	MEDIAN	73.5
●	LOWER QUARTILE	69.1



EDU/017 – The percentage of learners achieving the Level 2 Threshold inclusive of Mathematics and English and/or Welsh 1st Language – Best performer achieved 61.5%

	Comparator	Data Value
●	Wales	50.7
●	UPPER QUARTILE	54.9
●	MEDIAN	51.6
●	LOWER QUARTILE	46.5

