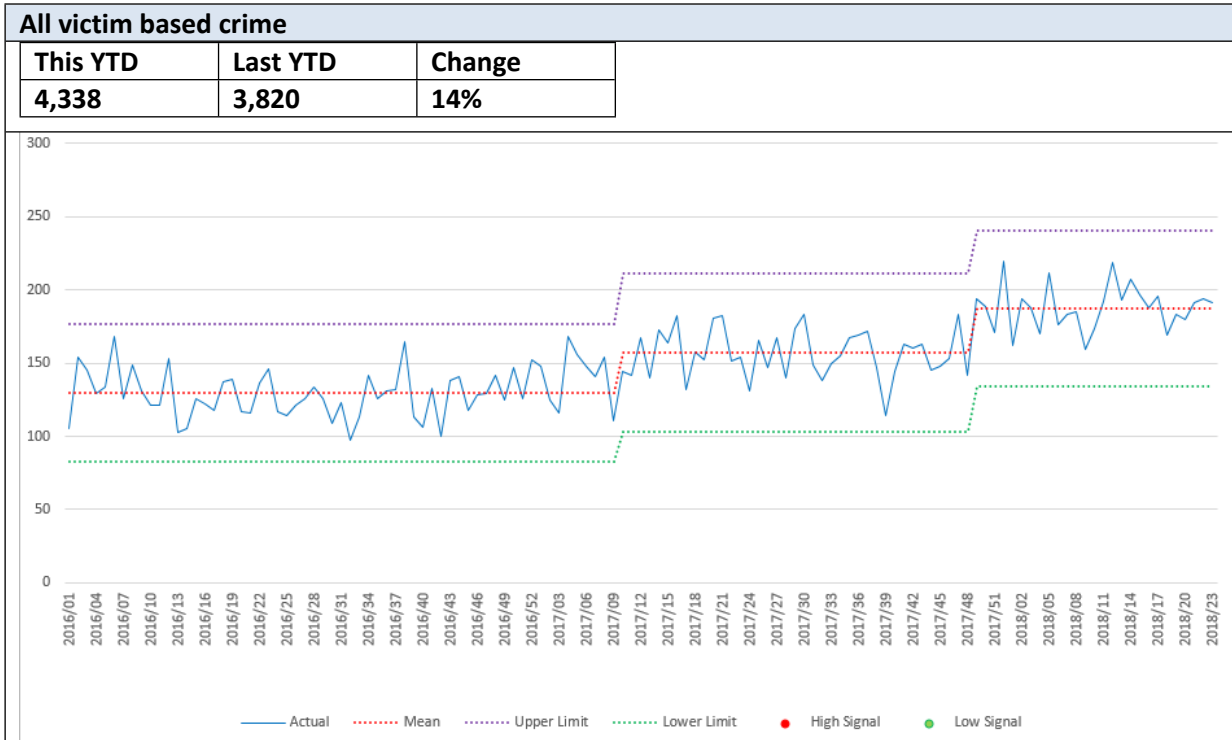
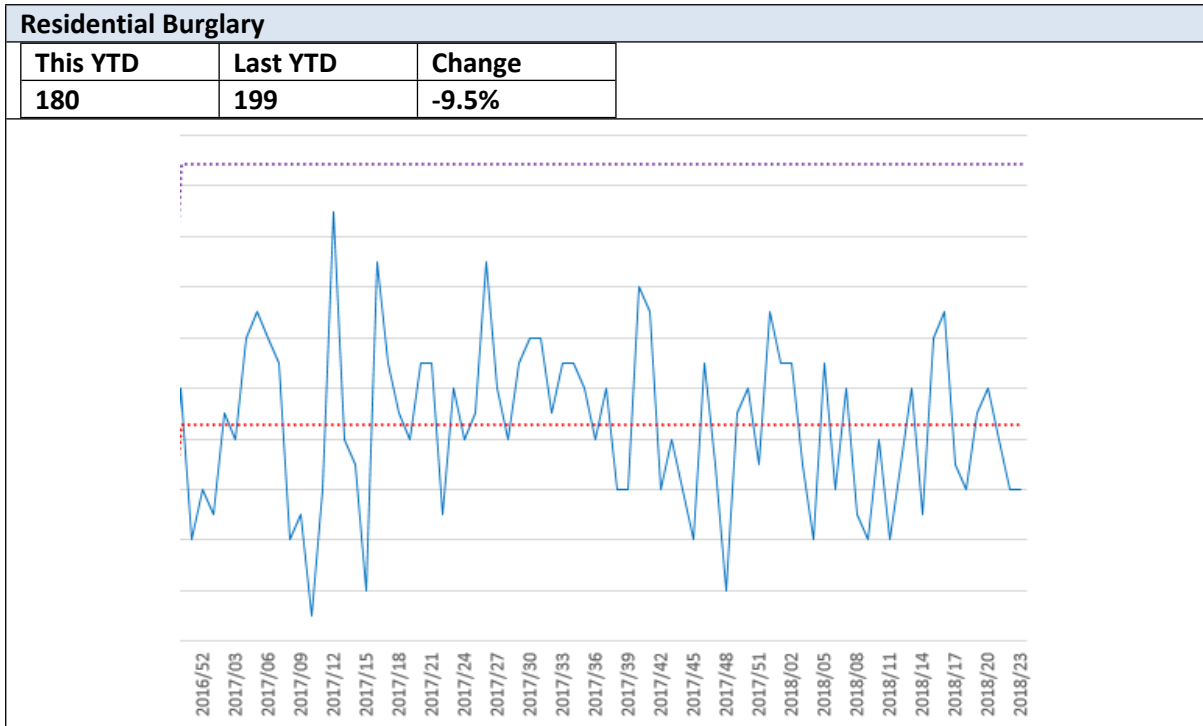


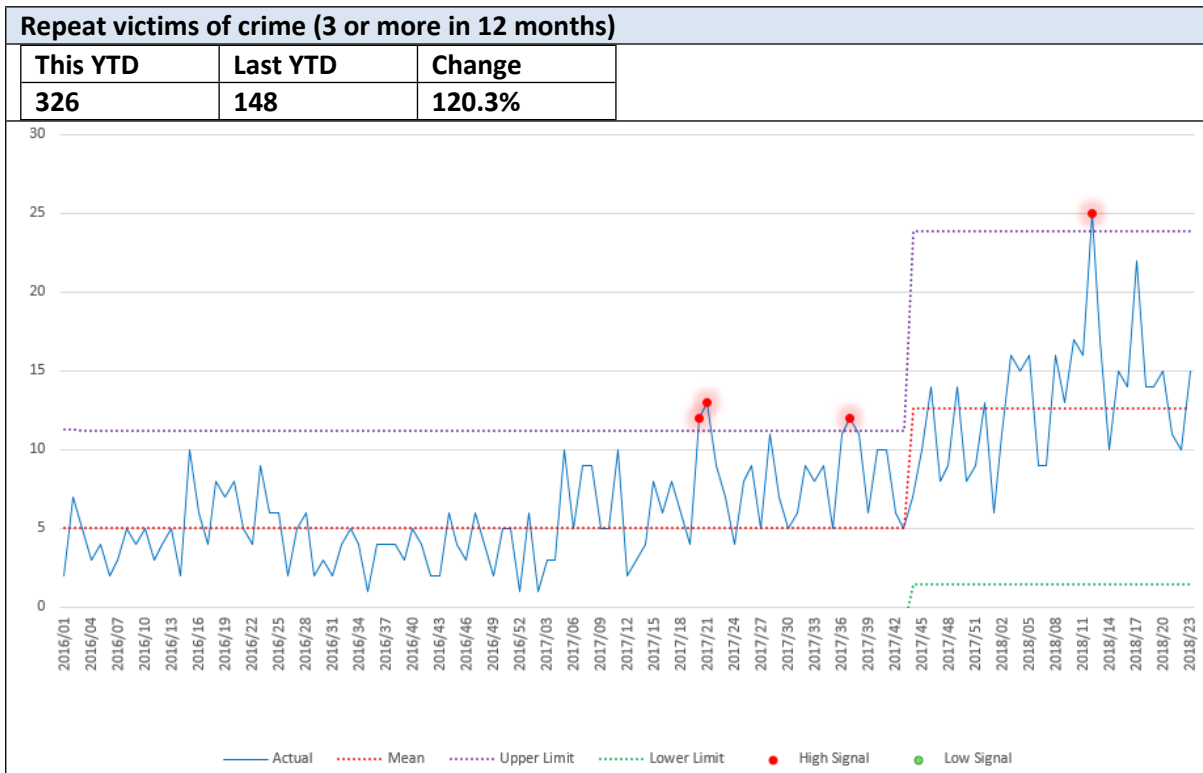
Subject:	North Wales Police Overview of Crime and Disorder Trends in Flintshire
Author:	Owen Preece, Partnership Analysis Manager
Date:	10/09/2018



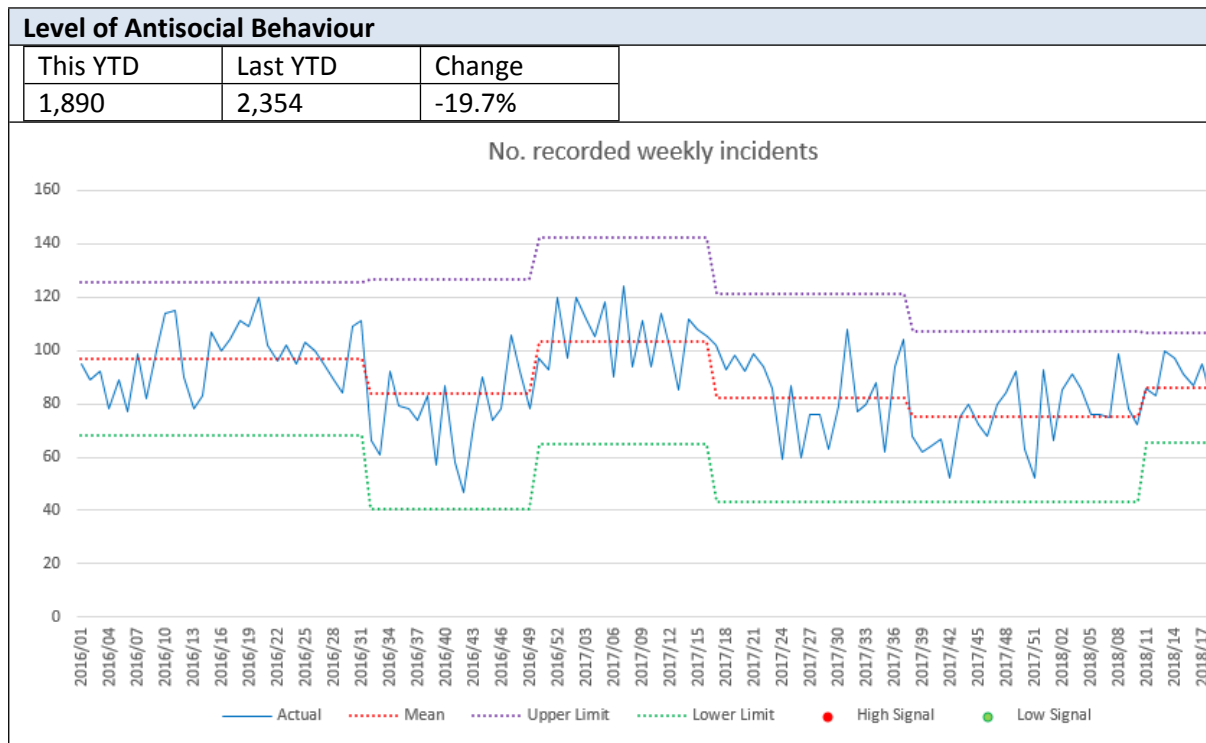
- Although **Victim Based Crime** increased in Flintshire by 16% in 2017/18 it was the Local Authority that experienced the smallest rise in North Wales. Analysis has evidenced that the increase is a result of an improvement in crime recording effectiveness rather than an increase in offending; these changes have had a particular impact on the number of recorded Violence and Sexual offences. National trends reflect similar increases in recorded crime levels with improved data integrity and efficient crime recording being emphasised nationally. Flintshire is below average compared to its Most Similar Group (MSG) and is anticipated to remain stable.
- A further increase of 14% has been observed in 2018/19 year to date. A new process for recording stalking and harassment has contributed to an increase in victim based crime across the force area.



- Acquisitive crime** in Flintshire remains relatively stable. Reductions in residential burglary have been offset by increases in Shoplifting offences, particularly in Holywell and Sealand. Burglary, vehicle crime and shoplifting are all below average in Flintshire when compared to its Most Similar Group.



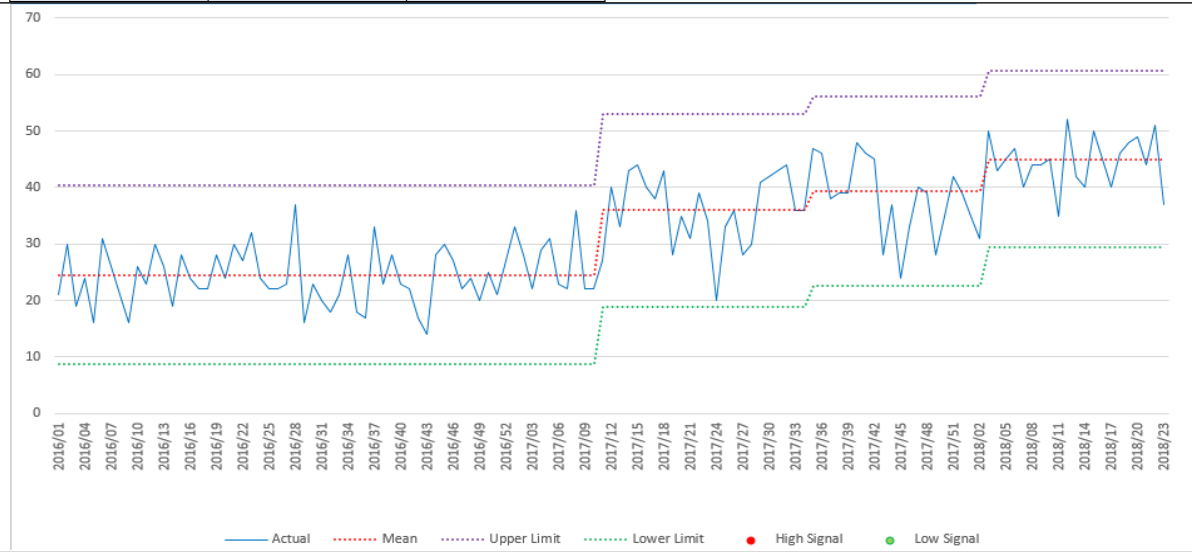
- The number of **repeat victims of crime** (3 or more in 12 months) continues to increase in Flintshire as they do across North Wales as a whole. Over 70 percent of repeat victims are victims of violence; as the changes in the recording processes have had a significant impact on violent crime levels it has resulted in more repeat victims being identified.



- Antisocial behaviour** reported to North Wales Police is highly seasonal with a significantly higher number of incidents reported during summer months when compared to winter months. Recorded ASB levels in Flintshire are lower in 2018/19 when compared to previous years. Repeat victims, locations and high risk vulnerable victims are referred for review to a multi-agency tasking group (Community Demand Reduction Partnership).

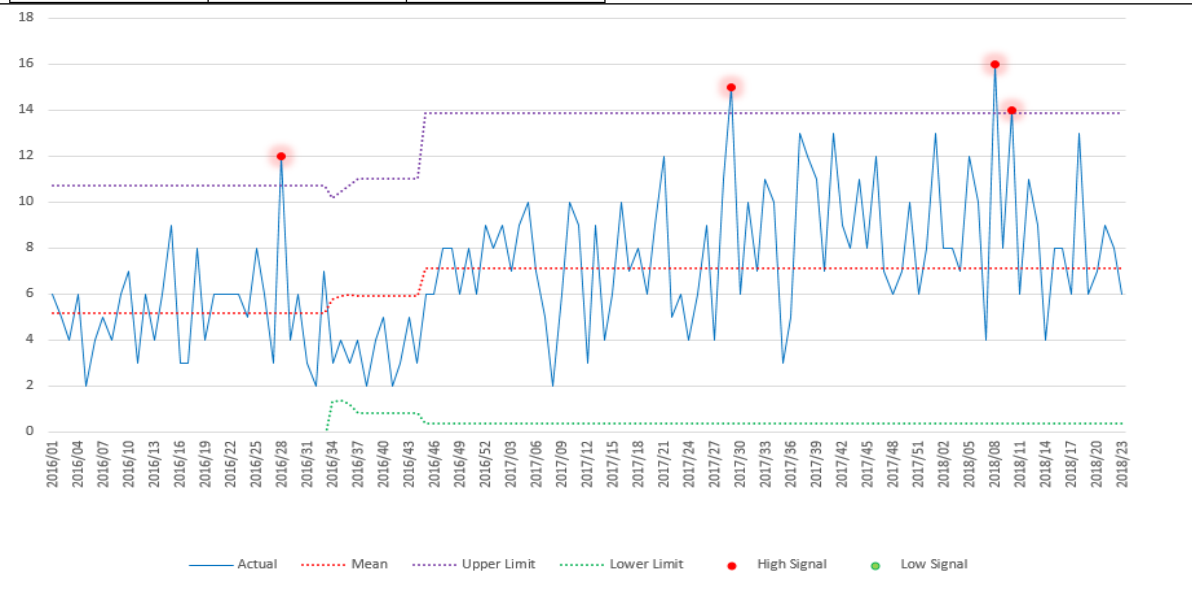
Level of Domestic Abuse

This YTD	Last YTD	Change
1,003	743	35%

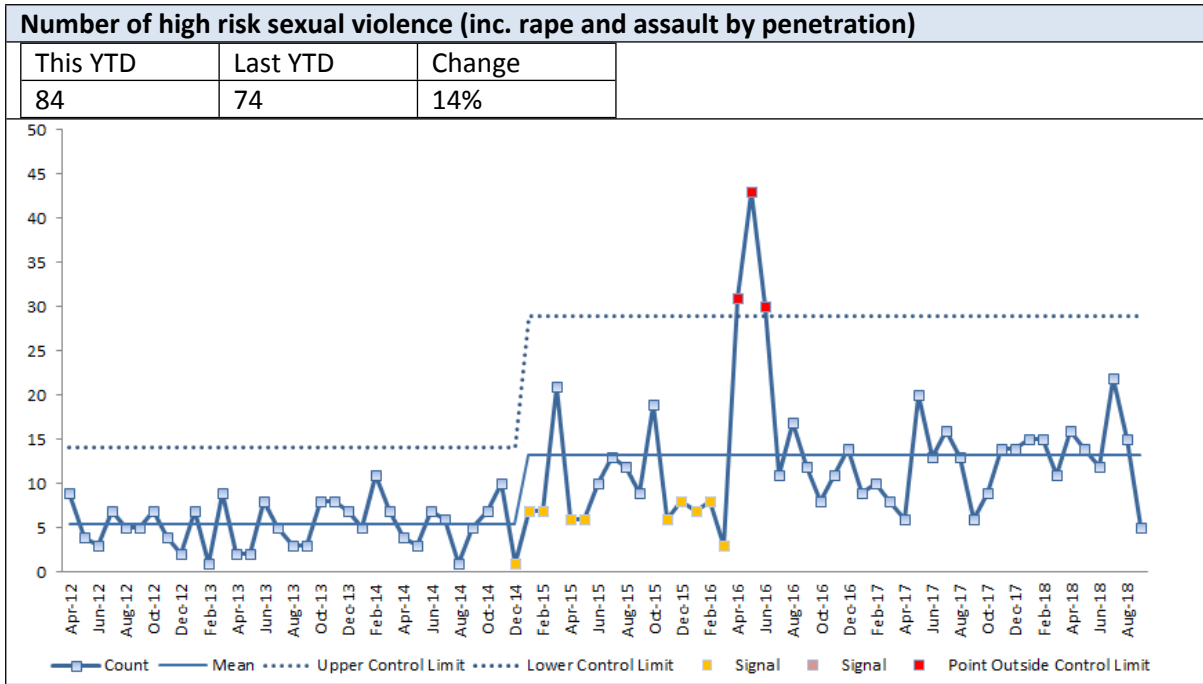


Repeat victims of Domestic Abuse incl. non-crime occurrences (3 or more in 12 months)

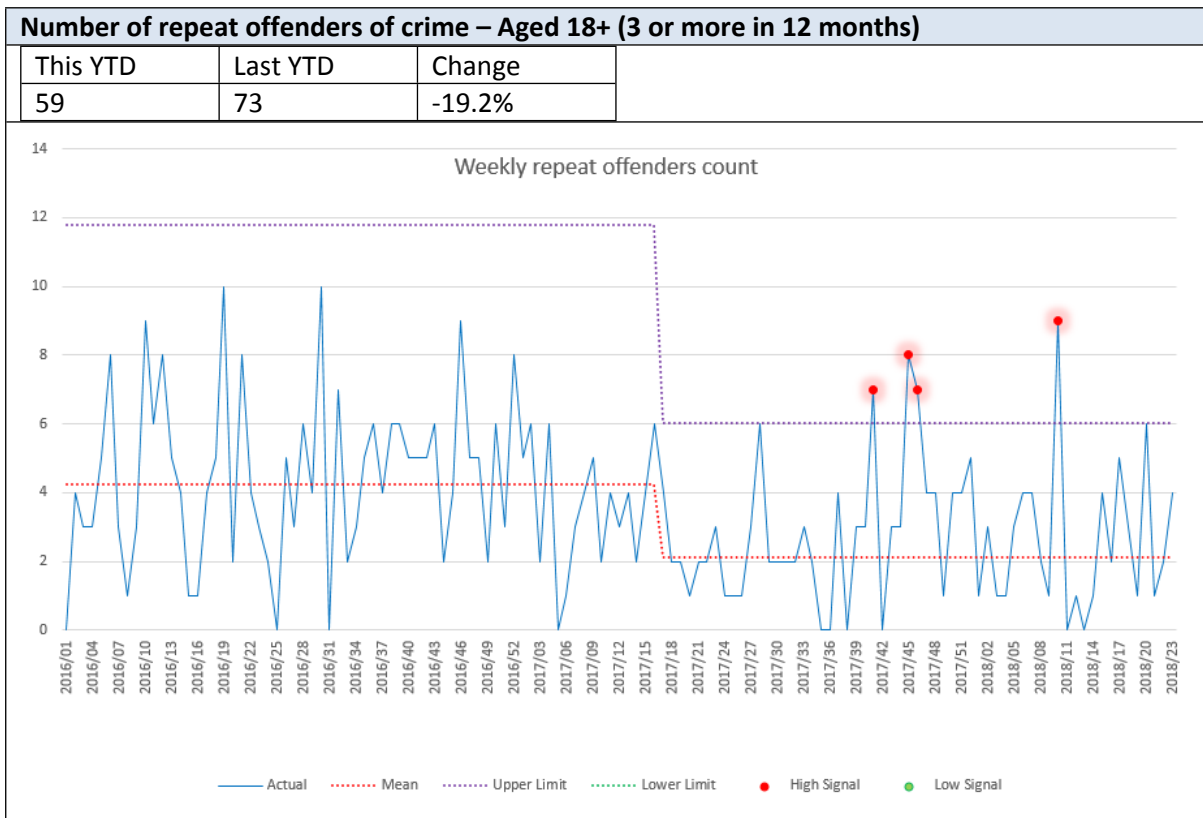
This YTD	Last YTD	Change
201	167	20.4%



- With a national focus on crime recording integrity, changes in the recording of victim based crime have had a particular impact on domestic related offences. As a result, reports of **Domestic Crime** and **repeat victims of DA** being identified in Flintshire continue to increase.



- Recorded levels of **High Risk Sexual Violence** have remained relatively stable, although there were spikes in offending linked to historic reporting. In comparison to its Most Similar Group sexual violence in Flintshire is average. **CSE** offences are few in Flintshire with 2 offences reported year to date.



Official

- Repeat adult offenders age 18 and over who have been charged or cautioned for three or more crimes in 12 months. **Adult reoffending** has remained stable in Flintshire for several months. **Youth reoffending** also remains largely unchanged.