

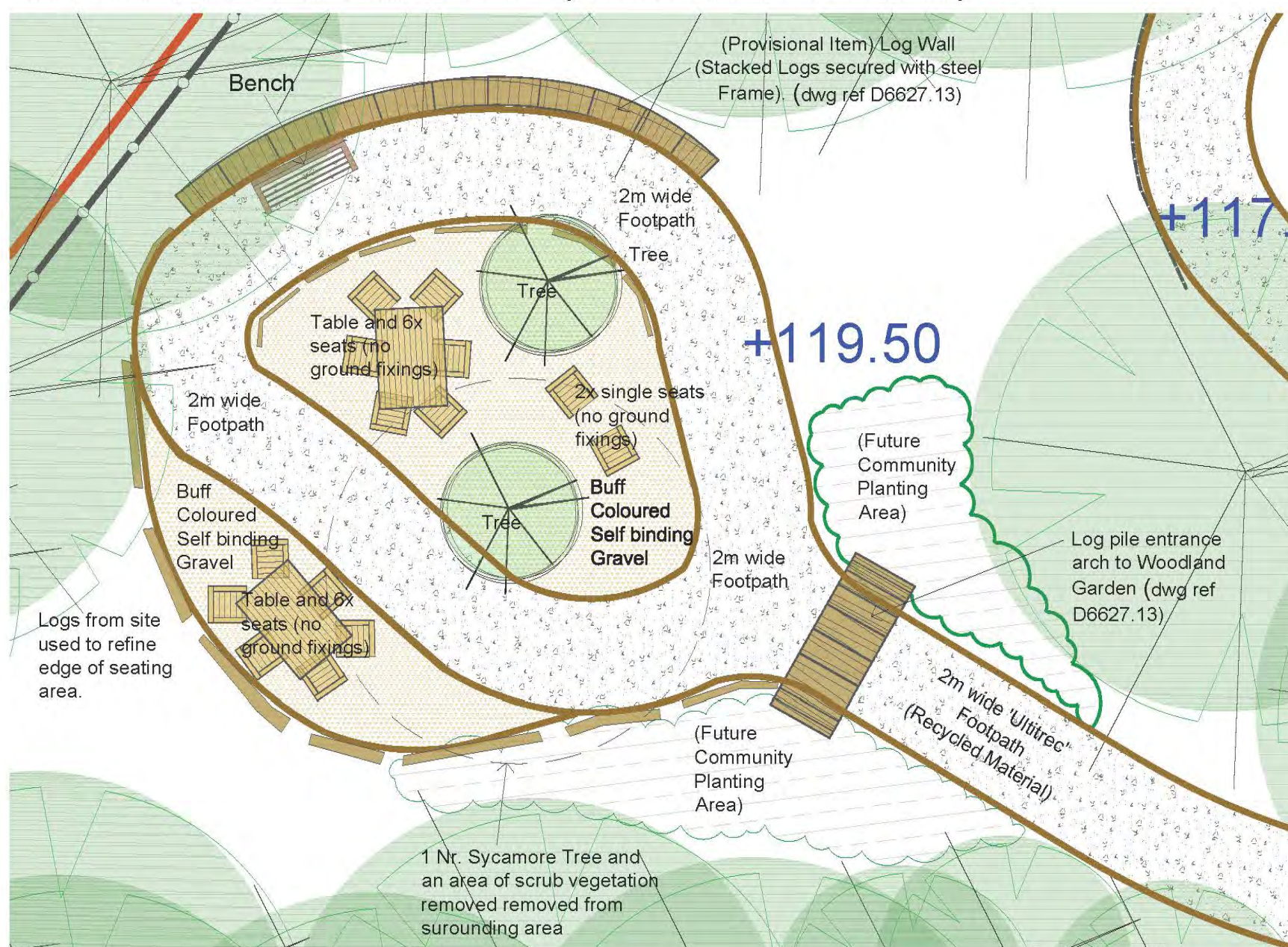
Woodland General Layout Plan (Scale 1/250 at A1)

Precedent Images



Woodland Glade Garden- See insert below

Woodland Garden Glade (Scale 1/100 at A1)



- KEY**
- Planning**
 - Planning Boundary
 - Surfacing**
 - 'Ultirec' Recycled Surfacing (Surfacing Type1- dwg ref D6627.11) By Tarmac (or similar approved). Tanalised timber edge
 - Self-binding Gravel (Surfacing Type2- dwg ref D6627.11) Breedon Aggregates 'Wayfarer' (or similar approved).
 - Existing Path Cleared of Vegetation and lightly graded to a smooth surface.
 - Loose 20mm single size stone with 50mm soil cover
 - Walls, Features and Furniture**
 - Log Wall (dwg ref D6627.13) (Steel Braced). Logs sourced from site clearance
 - Log Pile Entrance Arch (dwg ref D6627.13) (Steel Braced). Logs sourced from site clearance
 - Log lengths to Define Seating Area Logs sourced from site clearance
 - Recycled Plastic Tables and Seats Crews Mess Table (1750 x 1200mm) and 8 Chairs (680 x 850mm) Colour: Brown.
 - Recycled Plastic Bench Recycled Plastic Sloper Three Seat by Marmax. Colour Brown.
 - Timber Steps (dwg ref D6627.10) See Details
 - Steel Handrails See Details
 - 1.8m high Vertical Bar Steel Fencing to Boundaries. Fencing by IAE or similar (Colour- Dark Green)
 - Trees and Vegetation**
 - Existing Trees to Remain Approximate Location and Crown Spreads shown
 - New Tree Planting See Schedule
 - New Planting (See Planting Plan and Schedules)
 - Future Community Planting Areas (For information only)
 - Amenity Grass
 - Spring Bulbs within Grass Areas
- Contractor to translocate any bluebells disturbed during works into areas of existing woodland as directed by project manager.

- Levels**
- Contractor to allow for earth grading between existing and proposed levels.
 - 119.50+ Proposed Levels
 - 1/20 Gradients to Pathways
 - Slopes and Grading

All proposals shown are indicative and are subject to minor alterations. Setting out on site to take place between landscape architect and arboriculturalist to achieve scheme objectives and limit impact on existing trees and their roots.

Do not scale from drawing.

Reproduced by permission of Ordnance Survey on behalf of Her Majesty's Stationery Office. © Crown Copyright and database right 2010. All rights reserved.

Rev	Description	Drawn	Approved	Date
A	Amendments to memory walk	JTS	GDA	14.11.17

THE ENVIRONMENT PARTNERSHIP
 Genesis Centre, Birchwood Science Park, Warrington WA3 7BH
 Tel 01925 844004 e-mail tep@tep.uk.com www.tep.uk.com

Project
Holywell ECU

Title
Landscape Masterplan- Woodland Area

Drawing Number
D6627.005A

Scale	Date
Various at A1	02/11/2017
Drawn ES	Checked JTS
	Approved GDA

Drawing to be read in conjunction with detailed drawings, planting schedules and specification for works



Existing View to Veteran Trees (Holm Oak and Beech) (Approximate position for new Bench)

1.8 high x 3.5m wide high vertical bar steel gate. (Blore Finial)